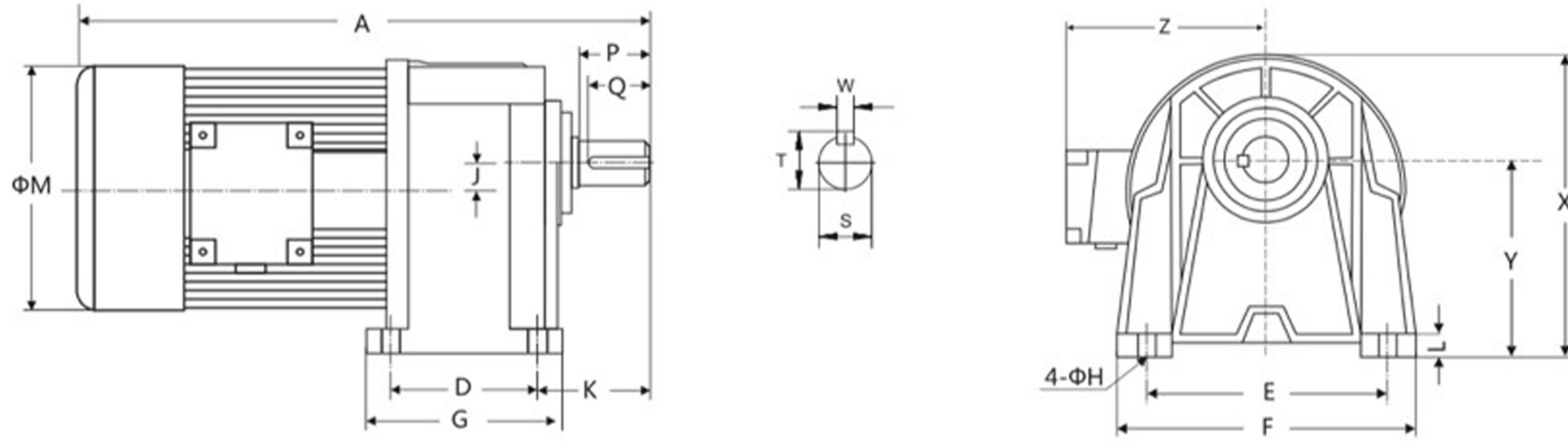


GH Horizontal Type 3-Phase Motor



Output Shaft						
Shaft		Keyway			Key	
S	h6	P	W	T	Q	SPEC'
Φ18		30	5	20	25	5×5×25
Φ22		40	7	25	35	7×7×35
Φ28		45	7	31	40	7×7×40
Φ32		55	10	35	50	10×8×50
Φ40		65	10	43	60	10×8×60
Φ50		80	14	53.5	75	14×9×75

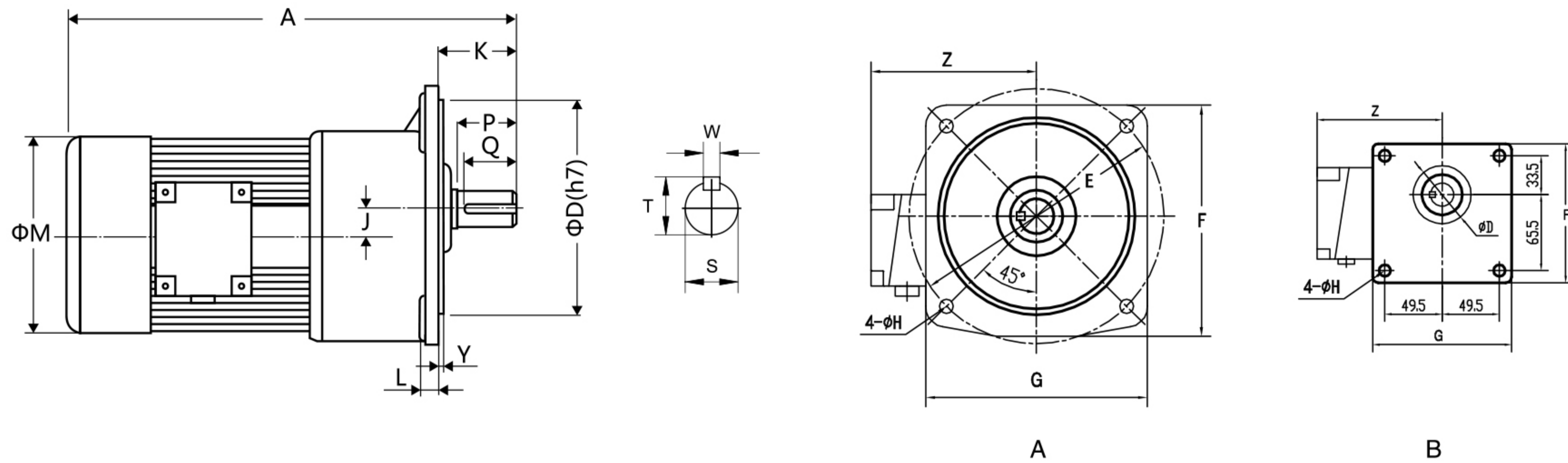
Dimensions

mm

Power	Ratio	Code	Size(S)	A	D	E	F	G	H	J	K	L	M	X	Y	Z
0.1KW 1/8HP	3-50	1#	18	255	40	110	135	65	9	16	50	14	130	132	88.5	120
	60-200	2#	22	285	65	130	158	90	11	18.17	60	13	130	152	97.5	120
0.2KW 1/4HP	3-10	1#	18	290	40	110	135	65	9	16	50	14	130	132	88.5	120
	15-90	2#	22	320	65	130	158	90	11	18.17	60	13	130	152	97.5	120
	100-200	3#	28	355	90	140	178	120	11	20.8	70	17	130	178	116	120
0.4KW 1/2HP	3-10	2#	22	325	65	130	158	90	11	18.17	60	13	162	152	97.5	135
	15-90	3#	28	360	90	140	178	120	11	20.8	70	17	162	178	116	135
	100-200	4#	32	395	130	170	200	168	13	30.2	70	18	162	215	138.5	135
0.75KW 1HP	3-25	3#	28	380	90	140	178	120	11	20.8	70	17	162	178	116	135
	30-120	4#	32	415	130	170	200	168	13	30.2	70	18	162	215	138.5	135
	125-200	5#	40	465	150	210	265	205	15	36	84	24	162	300	160	135
1.5KW 2HP	3-30	4#	32	445	130	170	200	168	13	30.2	70	18	182	215	138.5	145
	40-100	5#	40	490	150	210	265	205	15	36	84	24	182	300	160	145
	110-180	6#	50	530	170	265	310	230	18	51	122	30	182	350	200	145
2.2KW 3HP	3-40	5#	40	525	150	210	265	205	15	36	84	24	212	300	160	160
	50-90	6#	50	560	170	265	310	230	18	51	122	30	212	350	200	160
3.7KW 5HP	3-10	5#	40	565	150	210	265	205	15	36	84	24	212	300	160	160
	15-60	6#	50	600	170	265	310	230	18	51	122	30	212	350	200	160

Size table

GV Vertical Type Plate 3-Phase Motor



GV

Output Shaft						
Shaft		Keyway			Key	
S	h6	P	W	T	Q	SPEC'
Φ18		30	5	20	25	5×5×25
Φ22		40	7	25	35	7×7×35
Φ28		45	7	31	40	7×7×40
Φ32		55	10	35	50	10×8×50
Φ40		65	10	43	60	10×8×60
Φ50		80	14	53.5	75	14×9×75

Dimensions

mm

Power	Ratio	Code	Size(S)	A	D	E	F	G	H	J	K	L	M	Y	Z
0.1KW 1/8HP	3-50	1#	*18	255	50	140	120	120	9	16	39	10	129	6	120
	60-200	2#	22	285	148	185	176	165	11	18.17	45	12	129	3.5	120
0.2KW 1/4HP	3-10	1#	*18	290	50	140	120	120	9	16	39	10	129	6	120
	15-90	2#	22	320	148	185	176	165	11	18.17	45	12	129	3.5	120
	100-200	3#	28	355	170	220	218	200	12	20.8	58	14	129	4	120
0.4KW 1/2HP	3-10	2#	22	325	148	185	176	165	11	18.17	45	12	162	3.5	135
	15-90	3#	28	360	170	220	218	200	12	20.8	58	14	162	4	135
	100-200	4#	32	395	185	255	248	225	15	30.2	66	16	162	4	135
0.75KW 1HP	3-25	3#	28	380	170	220	218	200	12	20.8	58	14	162	4	135
	30-120	4#	32	415	185	255	248	225	15	30.2	66	16	162	4	135
	125-200	5#	40	465	230	310	290	268	15	36	85	20	162	5	145
1.5KW 2HP	3-30	4#	32	445	185	255	248	225	15	30.2	66	16	182	4	145
	40-100	5#	40	490	230	310	290	268	15	36	85	20	182	5	145
	110-180	6#	50	530	280	390	365	335	18	51	92	25	182	5	145
2.2KW 3HP	3-40	5#	40	525	230	310	290	268	15	36	85	20	212	5	160
	50-90	6#	50	560	280	390	365	335	18	51	92	25	212	5	160
3.7KW 5HP	3-10	5#	40	565	230	310	290	268	15	36	85	20	212	5	160
	15-60	6#	50	600	280	390	365	335	18	51	92	25	212	5	160

BELONG TO B TYPE OUTPUT FLANGE

Technical data

Output Torque

Normal Duty Type

Kg-m

Ratio	Output R.P.M		Output Torque													
			0.1KW 1/8HP		0.2KW 1/4HP		0.4KW 1/2HP		0.75KW 1HP		1.5KW 2HP		2.2KW 3HP		3.7KW 5HP	
	Hz															
	50	60	50	60	50	60	50	60	50	60	50	60	50	60	50	60
3	500	600	0.19	0.16	0.37	0.31	0.70	0.60	1.30	1.10	2.60	2.20	3.80	3.20	6.00	5.50
5	300	360	0.31	0.26	0.62	0.52	1.20	1.00	2.20	1.90	4.50	3.80	6.72	5.60	11.0	10.0
10	150	180	0.62	0.52	1.24	1.04	2.40	2.00	4.50	3.80	9.10	7.60	13.7	11.2	22.0	20.0
15	100	120	0.91	0.76	1.80	1.50	3.60	3.00	6.80	5.70	13.5	11.3	20.1	16.8	32.6	29.8
20	75	90	1.20	1.00	2.40	2.00	4.80	4.00	9.00	7.50	18.1	15.1	26.8	22.4	43.6	36.0
25	60	72	1.40	1.20	3.00	2.50	6.00	5.00	11.2	9.40	22.6	18.9	33.6	28.0	53.9	49.53
30	50	60	1.80	1.50	3.60	3.00	7.20	6.00	13.5	11.3	27.1	22.6	40.3	33.6	64.7	58.8
40	37	45	2.20	1.90	4.60	3.90	9.30	7.80	17.5	14.6	34.9	29.1	52.0	43.4	86.3	78.4
45	33	40	2.70	2.20	5.40	4.40	10.9	9.10	20.6	17.0	41.1	34.0	59.8	49.6	98.5	81.7
50	30	36	2.80	2.40	5.70	4.80	11.6	9.70	21.9	18.3	43.6	36.4	65.1	54.3	107	97.0
60	25	30	3.40	2.90	6.90	5.80	13.9	11.6	26.2	21.9	52.4	43.7	78.1	65.1	127	115
70	21	25	4.30	3.60	8.00	6.80	16.2	13.5	31.5	26.3	62.4	52.0	92.5	77.1		
80	19	23	4.80	4.00	9.20	7.70	18.4	15.4	35.5	29.6	70.8	59.0	105	87.5		
90	17	20	5.20	4.40	10.3	8.60	20.7	17.3	39.3	32.8	77.1	64.3	113	94.3		
100	15	18	5.80	4.90	11.5	9.60	23.0	19.2	43.2	36.0	83.7	69.8	126	105		
120	12	15	6.90	5.80	13.8	11.5	27.7	23.1	51.8	43.2	101	83.7				
140	11	13	8.00	6.70	16.0	13.4	32.0	26.7	59.7	49.8	116	96.8				
160	9	11	9.10	7.60	18.3	15.3	36.3	30.3	68.0	56.7	132	110				
180	8	10	10.3	8.60	20.7	17.3	40.8	34.0	76.8	64.0	148	123				
200	7	9	11.6	9.70	22.9	19.1	43.2	36.0	82.8	69.0						

Overhang Load Of The Output Shaft

Kg

Ratio	Output R.P.M.		Overhang Load													
			0.1KW 1/8HP		0.2KW 1/4HP		0.4KW 1/2HP		0.75KW 1HP		1.5KW 2HP		2.2KW 3HP		3.7KW 5HP	
	Hz															
	50	60	50	60	50	60	50	60	50	60	50	60	50	60	50	60
3	500	600	30	25	30	25	54	45	60	50	145	130	165	150	200	180
5	300	360	36	30	36	30	78	70	85	75	165	150	210	180	270	225
10	150	180	70	60	70	60	150	130	180	150	280	250	430	360	570	550
15	100	120	110	90	110	100	175	160	165	160	355	348	490	450	780	750
20	75	90	150	125	135	125	190	170	175	170	369	365	540	500	850	830
25	60	72	155	140	150	140	210	180	185	180	450	430	650	630	1100	1050
30	50	60	160	150	170	165	235	220	415	400	480	450	690	650	1200	1100
40	38	45	160	160	180	180	270	260	430	420	580	550	710	670	1280	1200
45	33	40	170	170	180	180	335	328	440	430	590	570	820	780	1300	1250
50	30	36	170	170	180	180	350	335	450	440	600	580	850	820	1400	1350
60	25	30	180	180	180	180	350	350	450	450	630	610	900	900	1400	1400
70	21	25	180	180	180	180	350	350	460	460	670	650	1100	1100		
80	18	22	180	180	180	180	350	350	460	460	680	680	1100	1100		
90	16	20	180	180	180	180	350	350	500	500	850	850	1200	1200		
100	15	18	200	200	250	250	380	380	590	590	900	900				
120	12	15	200	200	320	320	390	390	640	640	920	920				
140	11	13	200	200	320	320	400	400	679	679	920	920				
150	10	12	220	220	330	330	420	420	679	679	950	950				
160	9	11	220	220	330	330	420	420	700	700	920	950				
180	8	10	240	240	350	350	430	430	720	720	980	980				
200	7	9	240	240	350	350	430	430	720	720						
1/250 ~ 1/1800			300	300	480	480	720	720	1400	1400						